

**Welcome to Devonport, one of Auckland's oldest settlements.**

Devonport was inhabited by Maori as early as the 1300's, followed by Europeans in 1840, who named it Flagstaff because of the flagstaff raised on nearby Takarunga (Mt. Victoria).

Today it is an attractive seaside village bursting with art galleries, cafes, museums and examples of Victorian architecture, all within easy walking distance of the Devonport Ferry Terminal.

This map is designed as an easy-to-follow visual guide to some of Devonport's highlights, so keep your eyes open as you walk!

The walk takes about an hour and a half at a good pace. For the more inquisitive, allow extra time to explore the two Museums, Devonport and Torpedo, or for the adventurous, a detour to North Head and Cheltenham Beach.

Begin at number 1, The Depot. If you are reasonably fit and can do a little 'cross country' walking, follow the numbers along the path with white dashes, which takes you up Takarunga (Mt. Victoria) for spectacular 360 degree views, then down the other side to meander along the waterfront to an eventual end at the Devonport Ferry Terminal. If you prefer to stay on the footpath, choose the detour paths with yellow dashes, by-passing Takarunga and taking in numbers 37 and 38 along Victoria Rd.

We wish you an enjoyable walk and look forward to seeing you along the way.

For more copies of this map please contact:  
[gallery@depotartspace.co.nz](mailto:gallery@depotartspace.co.nz)

c

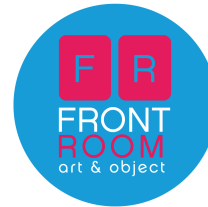
The Depot. Design by Leo Tomlinson and Outerspace Design.

# The Depot

The Depot is a multi-disciplinary arts community. It is open and inclusive and encourages engagement in all art forms - music, painting, sculpture, creative writing, performance, photography, to name a few. To this end we offer a variety of facilities and services that support the creative community, including:

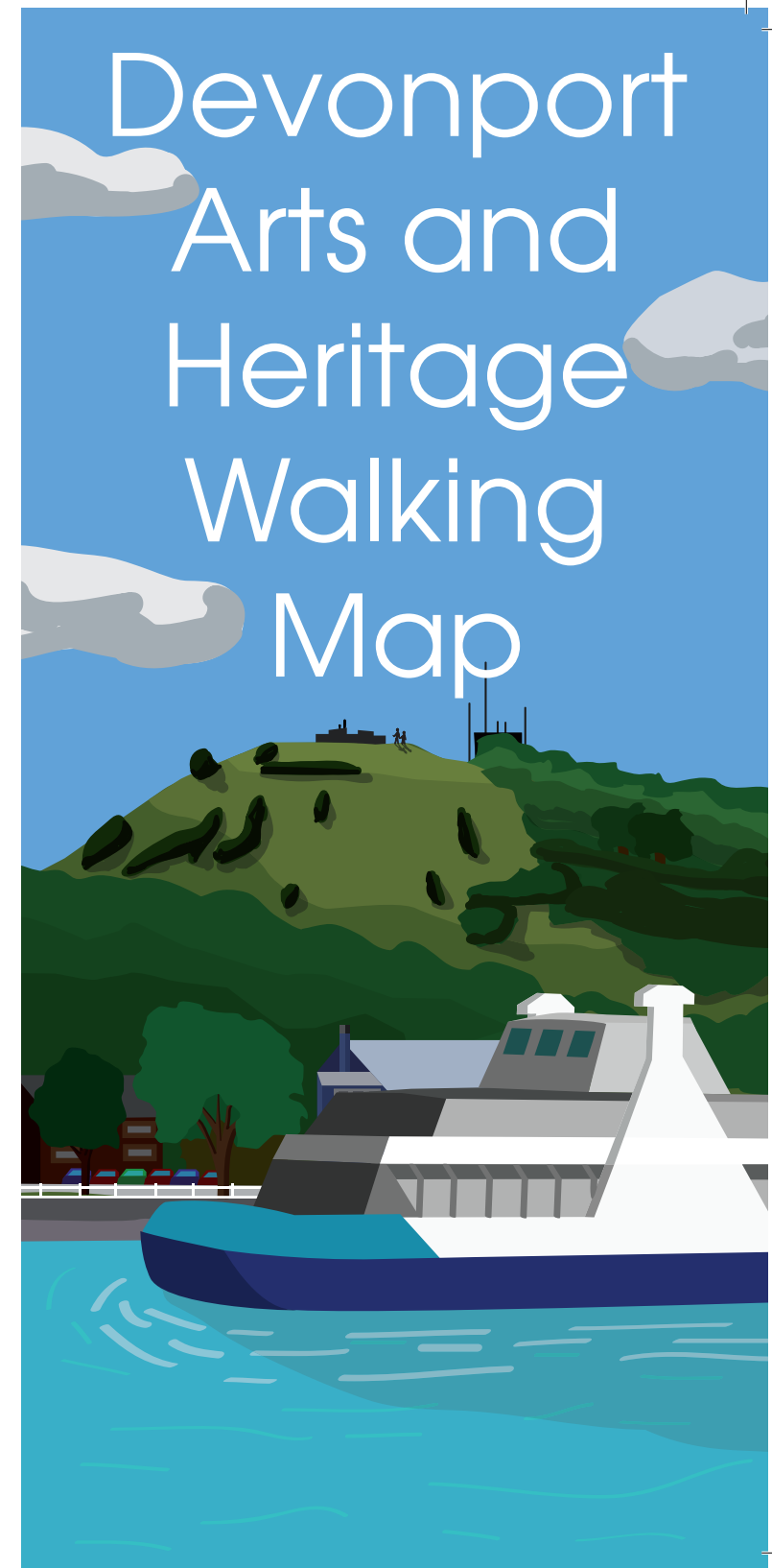
**Depot Sound, Jam Radio, Art Galleries, Morph Magazine, Outerspace Design, Cultural Icons, Arts Lab and more.**

For full information visit [www.depotartspace.co.nz](http://www.depotartspace.co.nz)



Situated street front at The Depot, Front Room offers you fresh and affordable contemporary NZ art and object in a retail gallery setting. Our key point of difference is a low commission rate which not only means more affordable artworks, but also ensures the lion's share of any purchase goes to the artist. Front Room offers a diverse range of work, created by both emerging and established artists. Many of the works are 'one off's you will not find elsewhere. We invite you to come and experience the difference.

28 Clarence Street, Devonport  
(09) 963 2331  
[www.depotartspace.co.nz](http://www.depotartspace.co.nz)



**KEY:**

- Arts Sites
- Heritage Sites
- Quirky Sites
- ▲ Three Mountains



- 1 The Depot. Open 7 days. [www.depotartspace.co.nz](http://www.depotartspace.co.nz)
- 2 Bear wall. Remains of a wall built in 1880 which housed a brown bear.
- 3 Devonport Ceramics. Open Wed - Sun. [www.jengis.co.nz](http://www.jengis.co.nz)
- 4 Peter Raos Gallery. Open Tue - Sun [www.raos.co.nz](http://www.raos.co.nz)
- 5 Art Of This World. Open 7 days. [www.artofthisworld.co.nz](http://www.artofthisworld.co.nz)
- 6 The Esplanade Hotel. Built in 1903. [www.esplanadehotel.co.nz](http://www.esplanadehotel.co.nz)
- 7 i - SITE. Open 7 days. Visitor information centre.
- 8 Georgie Scarlett Jewellery Shop 5, WJ Scott Mall
- 9 Newton Andrews. Open 7 days. [newton.andrews@xtra.co.nz](mailto:newton.andrews@xtra.co.nz)

**Mt. Victoria/Takarunga**  
 One of the six volcanoes Auckland was formed on. Occupied by early Maori, terraces and pits are visible on the northern and eastern slopes.

- 10 Flagstaff Gallery. Open 7 days. [www.flagstaffgallery.co.nz](http://www.flagstaffgallery.co.nz)
- 11 Taniwha seat. Created by artist Karen Kennedy. Great views!
- 12 Victoria Theatre. Built in 1912. [www.thevic.co.nz](http://www.thevic.co.nz)
- 13 Kerr St Artspace. Stop for the view. [www.depotartspace.co.nz](http://www.depotartspace.co.nz)
- 14 Michael King Writers' Centre. Original signalman's house. [www.writerscentre.org.nz](http://www.writerscentre.org.nz)
- 15 The Bunker. Built in 1885, it is now home to Devonport Folk Music Club.
- 16 Summit of Takarunga (Mt. Victoria). 1st signal mast erected here in 1842.
- 17 The Grave of Eru Patuone. An important Maori Rangitira (chief). Born 1764, died 1872.
- 18 28 Albert Rd. Edwardian double bay villa built in the 1880s.
- 19 Devonport Museum. Enter from Church St through Cambria Park, or off Vauxhall Rd.
- 20 Old Power Station. 47-49 Church St. Built in 1914, it is now private apartments.
- 21 Holy Trinity Church. 20 Church St. Gothic style designed by Edward Bartley in the 1880's.
- 22 Duder House, 11 Church St. Owned by early settlers, the Duder Family from 1880 to 1967.

**Mt. Cambria/Takaroro**  
 Originally a volcanic cone that was quarried away to provide roading, garden walls and ship ballast. Now an award winning park featuring hand-crafted steps up and over the precipitous bluffs of the old quarry.

**North Head/Maungauika**  
 This historic reserve is the only mainland reserve included in the Hauraki Gulf Maritime Park. Explore the tunnels and disappearing guns, enjoy spectacular views or learn about its past by watching the film in the old messes.

- 23 30-33 King Edward Pde. Originally the site of the Duder Brothers General Store, the building is in late baroque style designed by Edward Bartley.
- 24 Now Art by the Sea Gallery. Open 7 days. [www.artbythesea.co.nz](http://www.artbythesea.co.nz)
- 25 Lode Jewellery Design. Open Tue - Fri. [www.lodejewellery.com](http://www.lodejewellery.com)
- 26 Tainui Memorial. Commemorates the arrival of the Tainui Waka in Aotearoa around 1350.
- 27 Torpedo Bay. Navy Museum. Open 7 days. [www.navymuseum.mil.nz](http://www.navymuseum.mil.nz)
- 28 The Masonic Tavern. Built in 1866 by George Beddoes under contract to Thomas John Duder.
- 29 ARD Fairburn residence. Home of NZ Writer from 1946 to 1947.
- 30 Execution Site. Lt. Snow and family were murdered and Joseph Burns executed here.
- 31 Elizabeth House. Built early 1900's and used by the Navy to house the Wrens until 1991.
- 32 Flagstaff. Marks where the British Navy came ashore in 1840.
- 33 Memorial Plaque. What happened here in 1897?
- 34 Time Capsule. Laid in 1986 to commemorate Devonport Borough Council centennial.
- 35 Ferry Wharf. The first ferry service from Auckland began in 1854 using sail or oar propelled whale boats.
- 36 William C Daldy. Steam ship built in 1935. Moored at Victoria Wharf. [www.daldy.com](http://www.daldy.com)
- 37 St Paul's Presbyterian Church. Built by Edward Bartley in 1917.
- 38 St Francis de Sales Catholic Church. Built in 1918 by Edward Mahoney.